



The new **Arteon** & all-new **Arteon Shooting Brake**





More than **impressive**

The new Arteon and the all-new Arteon Shooting Brake make a clear statement even when not in motion – with exclusive design, dynamic silhouettes and a good helping of sportiness that make them hard to resist. Premium materials and coordinated interior accents reveal their inner strength. But it's only when driving these vehicles that they show their full potential, with refined details and assist systems which guarantee high comfort in almost all driving situations. May we introduce the new Arteon and all-new Arteon Shooting Brake – more than impressive.



01

The all-new Arteon Shooting Brake

With its generous vehicle interior, the all-new Arteon Shooting Brake is ready for almost any adventure. Its rear has striking LED tail light clusters and chrome-plated twin tailpipes for a look that is as athletic as it is powerful.

01 The LED elements in the optional tail light clusters with 3D effect switch between tail light and brake light during braking. The wiping turn signal is yet another exciting enhancement. **E R OE**

02 From the wide radiator grille that dominates the front, across the sleek roof line to the impressive luggage compartment volume, the all-new Arteon Shooting Brake uses innovative **design** to demonstrate how exclusivity and functionality can be combined at a high level. **S**



02

Fuel consumption in litres/100km: 5.7–4.9 (combined); CO₂ emissions in g/km: 150–127 (combined); efficiency classes: A–A+
Standard equipment **S** Elegance standard equipment **E** R-Line standard equipment **R** Optional equipment **OE**



03

Fuel consumption in litres/100km: 6.4–4.8 (combined); CO₂ emissions in g/km: 149–126 (combined); efficiency classes: A–A+.

Standard equipment **S** Elegance standard equipment **LE** R-Line standard equipment **RE** Optional equipment **OE**

The new Arteon

It's undeniable: with a striking front view, the new Arteon inspires from first glance. The optional light signature of the LED headlights visually transitions into the chrome-plated radiator grille, while the black air inlets further emphasise the sporty ambition of the new Arteon.



03 You'll immediately recognise the new Arteon thanks to the clear statement its **design** and flowing silhouette make. Climb in and let yourself be inspired by its elegant interior and intuitive controls. **S**

04 Stylishly showcased: the new Volkswagen logo sits in the centre of the radiator grille. There is also the option to accentuate it further by adding a **light strip** that runs from the logo, across the wide front, to finish in the powerful LED headlights. **OE**

Elegance that touches **all the senses**

A space for exclusivity: the new touch steering wheel in leather, as well as the air conditioning system with touch function, are just two of many reasons that you will feel immediately at home. The background lighting, optionally available in up to 30 colours, further accentuates the individual character of the interior.



01 The majority of the classic function buttons have been replaced with touch-sensitive surfaces, so for example you can fully intuitively control the temperature using the sliders of the optional Climatronic system. **OE**

02 The optional **touch multifunction sports steering wheel** can be operated with simple taps of your fingers. In combination with the intelligent menu navigation and **Digital Cockpit Pro**, which is equipped as standard, it gives you access to many functions. Haptic feedback in the form of slight vibration confirms each input.

E R OE

03 With the **background lighting** you can wash the whole vehicle interior in your favourite colour. You can optionally choose from 30 colours. This function gently illuminates the dash, centre console, and front and rear doors. **R**



02



03

Fuel consumption in litres/100km: 6.4–4.8 (combined); CO₂ emissions in g/km: 149–126 (combined); efficiency classes: A–A+

Standard equipment **S** Elegance standard equipment **E** R-Line standard equipment **R** Optional equipment **OE**



Comfort

The new Arteon and all-new Arteon Shooting Brake are not only impressive in their extraordinary exterior design but also in the comfort their interiors offer. The all-new Arteon Shooting Brake is especially strong here, thanks to the sheer amount of interior space in the rear bench seat and luggage compartment.



04 Upon sitting into this vehicle, you will be welcomed with a spaciousness that will never cease to please, offering luxurious leg and headroom for all of your passengers as well as a 4+1 seating configuration possibility. **S**

05 The luggage compartment in the all-new Arteon Shooting Brake offers an incredible capacity of 1,632 litres, and a large boot lid makes loading extraordinarily easy. Got your hands full? With the optional **Easy Open**, the boot lid can also be opened using your foot. **E**



Fuel consumption in litres/100km: 5.7–4.9 (combined); CO₂ emissions in g/km: 150–127 (combined); efficiency classes: A–A+.

Standard equipment **S** Elegance standard equipment **E** R-Line standard equipment **R** Optional equipment **O**

Multimedia & navigation

A feast for the eyes and the ears: cutting-edge communication and navigation options, as well as the optional Harman Kardon sound system, make every journey an exclusive experience.



01 The optional **Discover Pro navigation system** with mobile online services from We Connect¹ boasts a 23.4 cm (9.2-inch) glass-covered TFT touchscreen with colour display, gesture control, and natural voice control for intuitive and convenient operation. Navigation services from **We Connect Plus**¹ support you in real time with intelligent Online Route Calculation that takes into account current traffic disruption. **OE**

02 Sound and vision: the optional **Harman Kardon sound system** is made for music lovers who want to do justice to their music collection when listening in the car. It promises balanced highs and lows fine-tuned by specialists, as well as precise bass for an on-road sound quality that you never dreamed was possible. **OE**

¹ To use We Connect services, you need to have a Volkswagen ID user account, and must log into We Connect with your username and password. In addition, a separate We Connect or We Connect Plus contract must be concluded online with Volkswagen AG. For We Connect Plus, you have 90 days from the handover of the vehicle to register the vehicle at portal.volkswagen-we.com, and use the services for the full duration of the agreed free period.
*Additional information about mobile online services from We Connect is available on the back page.





Driver assist systems

Your most attentive passengers: driver assist systems keep an eye on the road and the surroundings, and ensure even more comfort in almost any driving situation.



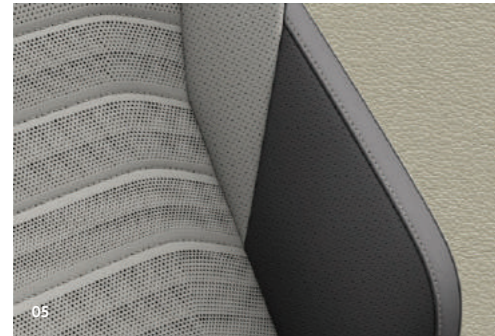
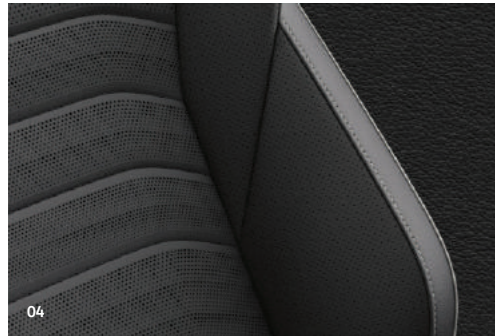
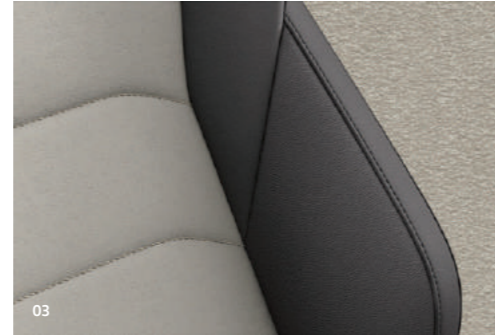
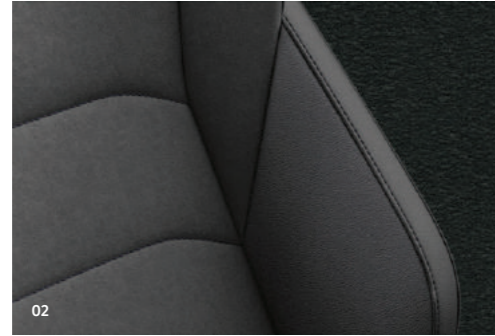
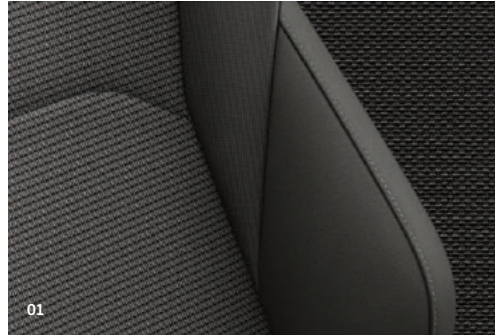
01 A useful companion: on motorways and well-developed provincial roads, the standard **Travel Assist** can keep you in lane and maintain speed, as well as staying the right distance from traffic ahead.¹ In heavy congestion or stop-and-go traffic, the system will also take care of constant starting and braking.² **S**

02 Car drivers can benefit from another pair of eyes when driving into parking spaces and manoeuvring, in particular. With the optional **Area View** that is exactly what you get, as four cameras monitor the area around the car and display helpful views on the screen of the Infotainment system. **OE**

¹ Within system limits. The driver must be prepared to override the assistance system at any time, and is not relieved of their responsibility to drive the vehicle with due care.

² In conjunction with dual clutch gearbox (DSG).

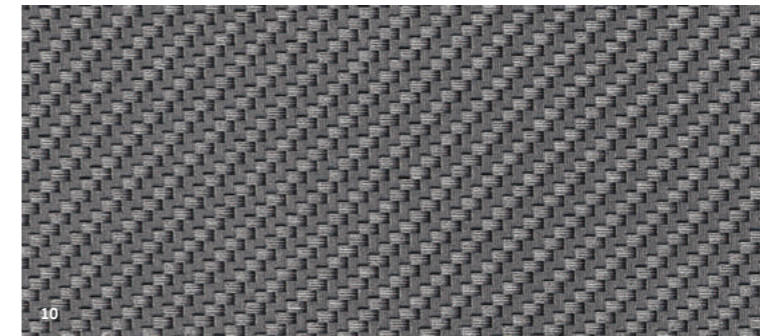
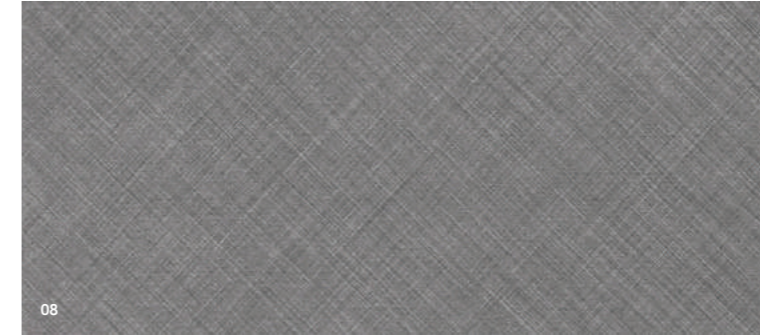
Upholstery & decorative trims



- 01 Sideways cloth in Titan Black TO **S**
- 02 Vienna leather/ArtVelours in Titan Black TO **E**
- 03 Vienna leather/ArtVelours¹ in Raven/Mistral YS **OE**
- 04 Nappa leather in Titan Black TO **OE**
- 05 Nappa leather¹ in Raven/Mistral YS **OE**
- 06 Vienna leather/ArtVelours in Titan Black OH **R**
- 07 Nappa leather² in Titan Black OH **OE**

¹ Only for Elegance.
² Only for R-Line.

The illustrations on these pages serve as a general guide only. The printing process cannot render the upholstery and decorative trims with absolute accuracy. The images of the seats are of our basic seat model; the seats in the vehicle may differ should you decide to upgrade. The cover material may vary on individual seats or seat sections.



- 08 Cross-cut Aluminium decorative trims **S**
- 09 Eucalyptus Wood decorative trims **E**
- 10 Silver Rise decorative trims² **R**



Paint finishes



01

- 01 Urano Grey paintwork 5K **S**
- 02 Pure White paintwork 0Q **OE**
- 03 Manganese Grey Metallic paintwork 5V **OE**
- 04 Pyrite Silver Metallic paintwork K2 **OE**
- 05 Kingfisher Blue¹ Metallic paintwork L4 **OE**



02



03



04



05



06

- 06 Kings Red Metallic paintwork P8 **OE**
- 07 Deep Black Pearl Effect paintwork 2T **OE**
- 08 Lapiz Blue² Metallic paintwork L9 **R**
- 09 Oryx White Mother-of-Pearl Effect paintwork OR **OE**



07



08



09

¹ Only for Elegance. ² Only for R-Line.

The vehicles on these pages only serve as examples to depict the paint finishes and do not include all of the specific special edition model equipment. Your Volkswagen dealership will be happy to inform you about other possible paintwork options for the various models. The illustrations on these pages serve as a general guide only. The print colours cannot reproduce the true appearance of the actual paint finishes.

Wheels



- 01 Valdemossa 18-inch alloy wheel **S**
- 02 Almere 18-inch alloy wheel **OE**
- 03 Muscat 18-inch alloy wheel **E** **OE**
- 04 Chennai 19-inch alloy wheel² **OE**
- 05 Montevideo 19-inch alloy wheel³ **R**



- 06 Rosario Black 20-inch alloy wheel **OE**
- 07 Nashville 20-inch alloy wheel⁴ **OE**

¹ The 17 inch winter wheel Cardiff can only be ordered in conjunction with adaptive chassis control DCC.
² Only for Elegance.
³ Only for R-Line.
⁴ Offered by Volkswagen R GmbH. Please refer to volkswagen.com for additional information.

The illustrations on these pages serve as a general guide only. The printing process cannot reproduce the true appearance of the wheels with absolute accuracy. Our vehicles are fitted with summer tyres as standard.

The new **Arteon**

The all-new **Arteon Shooting Brake**

0X5.1220.28.18

Edition: March 2021

Subject to change, errors excepted

volkswagen.ie

*To use We Connect services, you need a Volkswagen ID user account, and must log into We Connect with your username and password. In addition, a separate We Connect or We Connect Plus contract must be concluded online with Volkswagen AG. For We Connect Plus, you have 90 days from the handover of the vehicle to register the vehicle at www.portal.volkswagen-we.com or using the Volkswagen We Connect app (available in the App Store and Google Play Store), and you can use the services for the full duration of the agreed free period. The use of mobile online services from We Connect is made possible by an integrated internet connection. Where network coverage is available, the data costs incurred in this context within Europe are borne by Volkswagen AG, with the exception of Streaming & Internet services and in-car apps. To use the Streaming & Internet services, individual in-car apps and the Wi-Fi hotspot, data bundles can be bought via an external mobile communications partner, Cubic Telecom, and used within many European countries where network coverage exists. Information on terms, prices and supported countries is available at vw.cubitelecom.com. Alternatively, it is possible to use internet radio and media streaming via a mobile end device (for example a smartphone) that is enabled to function as a mobile Wi-Fi hotspot. In this case, the corresponding services are available only in conjunction with an existing or separately concluded mobile contract between you and your mobile provider, and only where coverage by the corresponding mobile network is available. Depending on your mobile phone tariff, online data exchange may incur additional charges, particularly if you are using the phone abroad (e.g. roaming charges). To be able to use the free We Connect app, you need a smartphone with a suitable iOS or Android operating system and a SIM card with data option and which has an existing mobile phone contract between you and your mobile phone provider, or a contract concluded separately for this purpose. The availability of the individual We Connect and We Connect Plus services described in the packages may vary from country to country. The services are available during the agreed contractual period and may be subject to amendments or ceased throughout the duration of the contract. For more information, visit volkswagen.ie/en/connectivity or contact your Volkswagen retailer. For information regarding your mobile phone tariff, please contact your network provider.

You can find up-to-date information regarding consumption and CO₂ emissions values/standards at volkswagen.de/emission.

The specified consumption and emissions values were obtained using the legally required measurement procedure. Since 01/09/2017, certain new vehicles have been type-approved according to the Worldwide Harmonised Light Vehicle Test Procedure (WLTP), a new, more realistic testing process for measuring fuel consumption and CO₂ emissions. The WLTP will gradually replace the New European Driving Cycle (NEDC) from 01/09/2018. Due to the

more realistic testing conditions, the fuel consumption and CO₂ emissions values measured according to the WLTP are often higher than those measured under the NEDC. This may result in corresponding changes to vehicle taxation from 01/09/2018. Further information about the differences between the WLTP and NEDC is available at volkswagen.ie/en/WLTP. It is currently still mandatory to include NEDC values in communications. For new vehicles that have been type-approved according to the WLTP, NEDC values will be derived based on WLTP values. The additional provision of WLTP values is voluntary until their application becomes mandatory. If NEDC values are specified as a range, they are not based on any individual vehicle and do not form part of the offer. They are provided purely for comparison purposes between the various types of vehicle. Additional equipment and accessories (attachments, tyre format, etc.) could change relevant vehicle parameters, such as weight, rolling resistance and aerodynamics. As well as weather and traffic conditions and personal driving style, these add-ons could also affect a vehicle's fuel consumption, power consumption, CO₂ emissions and performance. Note in accordance with the current version of Directive 1999/94/EC: Further information regarding official fuel consumption and the official, specific CO₂ emissions for new passenger vehicles is provided in the publication "Guidelines on fuel consumption, CO₂ emissions and electricity consumption of new cars", which is available free of charge from your Volkswagen retailer.

The vehicles shown in this brochure may be equipped with optional equipment that is available at an additional cost. Models shown in this brochure are for illustrative purposes only. Your local Volkswagen Retailer will be happy to provide you with details on the products available. Subject to change, errors excepted. DSG® and TSI® are registered trademarks of Volkswagen AG and other companies in the Volkswagen Group this document cannot be interpreted to mean that this mark is not a registered mark and/ or in Ireland and in other countries. The fact that a mark is not shown with an ® sign in or that this mark can be used without prior approval in writing from Volkswagen AG. Volkswagen provides for the return and recycling of end-of-life vehicles. As such, all Volkswagen vehicles can be recycled and, subject to fulfilment of legal prerequisites, can be returned free of charge. Further information is available from your Volkswagen Retailer, or at volkswagen.ie.