



The Polo



Content

04	Design	16	Polo GTI
07	Exterior	18	Upholstery
08	Interior	19	Wheels
11	Connectivity & Infotainment	20	Paint
12	Driver assistance systems	23	Service
14	Polo R-line		



Model shown is the Polo R-Line in optional 'Energetic Orange' metallic paint and optional Panoramic Sunroof. Model is for illustrative purposes only.

Design



The Polo looks out for you. With even more safety features than its predecessor, it keeps an eye on almost everything that's going on around you. However, the Polo itself is usually the centre of attention. This is thanks to its stunning new design with deep side lines, sculpted bonnet and new headlights.



Model shown is the Polo R-Line in optional 'Energetic Orange' metallic paint and optional Panoramic Sunroof. Model is for illustrative purposes only.



Model shown is the Polo R-Line in optional 'Energetic Orange' metallic paint and optional Panoramic Sunroof. Model is for illustrative purposes only.

Exterior



01 The new rear design with its tornado line is sure to impress: this prominent design line extends from the front wings along the standard four doors and around the boot lid. This creates a clear contour that conveys progressive dynamism. Apart from the new headlights at the front, the LED daytime running lights with automatic headlight control and LED number plate light enhance the vehicle's striking appearance.

02 The 16" 'Torsby' alloy wheels complement the appealing design, giving the Polo an athletic look. Standard on R-Line.

03 The Polo stands out with its striking, sporty design. With its long bonnet, the new front appears more dynamic and broader, thanks to its horizontal lines.



01 Soak up incredible views with the optional panoramic sliding/tilting roof, you can enjoy beautiful views wherever the road may take you. Optional on R-Line.

02 The stylish interior in the Polo is just as impressive as the exterior. With plenty of headroom and legroom for all passengers, it is particularly comfortable on long journeys.

Interior

Style and comfort are second nature inside the Polo. Coloured Dashpads and optional Style packs as well as different upholstery designs, allow you to add individuality and colour. Furthermore, plenty of head and legroom helps keep you relaxed, so you feel totally at home, the moment you sit behind the wheel.



Interior shown is Polo Comfortline with optional 'Discover Media' navigation system, optional Active Info Display, optional 'Park Assist', optional 2-Zone Climatronic air conditioning system, optional leather wrapped multifunction steering wheel and optional 'Energetic Orange' metallic paint. 'Discover Media', 2-Zone Climatronic Air Conditioning and 'Park Assist' are not available as options on Comfortline.



Interior shown is Polo Comfortline with optional Active Info Display, optional leather wrapped multifunction steering wheel, optional heated seats and optional 'Energetic Orange' metallic paint.

Connectivity & Infotainment

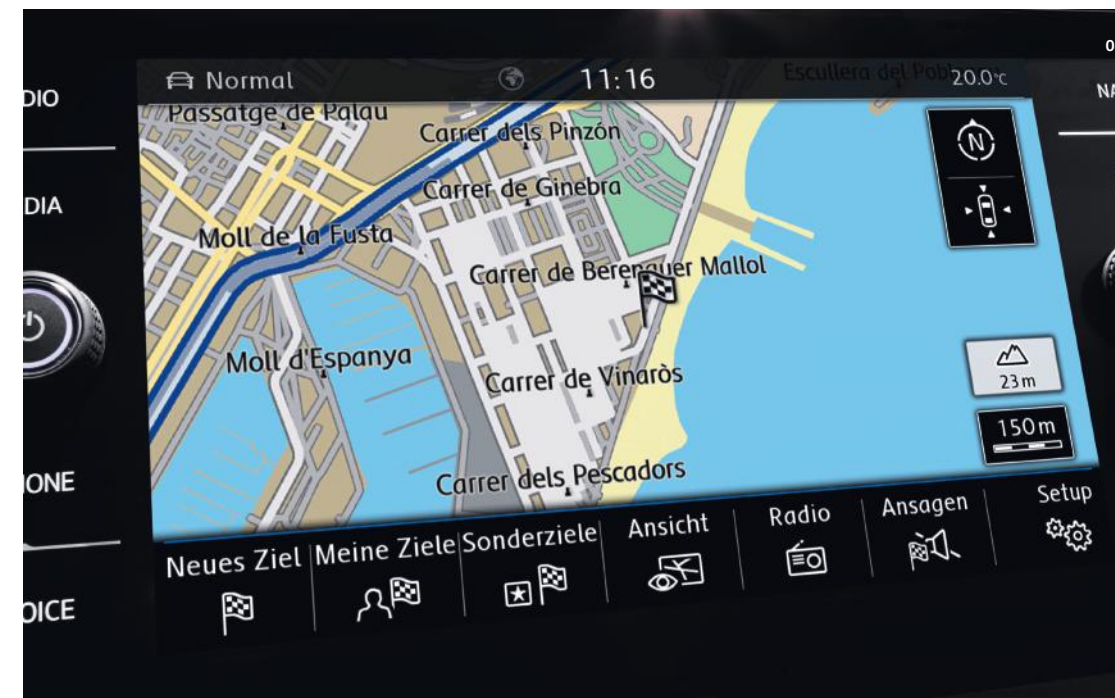
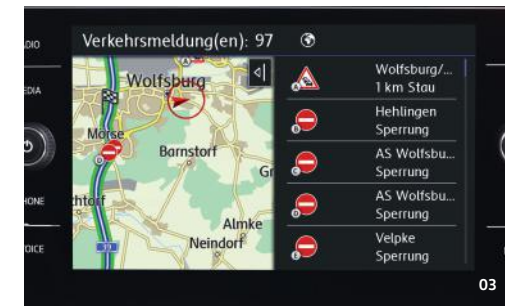
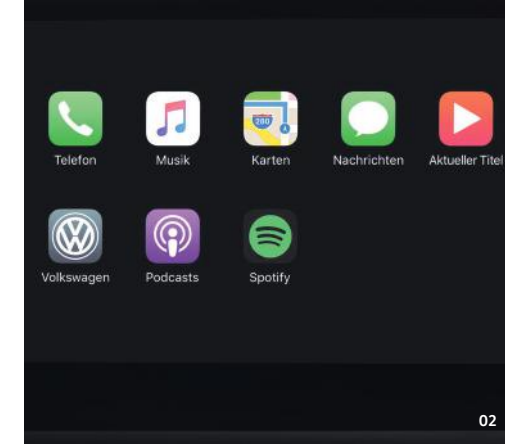
01 Active Info Display. Analogue is so yesterday, with optional Active Info Display, you can enjoy the benefits of an instrument cluster that provides a lot more than just speed data and the fuel gauge. Whether you want the navigation map to stretch across the entire display, a media display or a digital version of the speedometer: you decide what's on display. Optional on Comfortline, R-Line and GTI models.

02 App-Connect. App-Connect¹ comes with three innovative forms of technology that enable you to display content from your smartphone on the Infotainment system touchscreen with ease: MirrorLink®, Apple CarPlay™ and Android Auto™ by Google. As a result, you can use the most important functions on your smartphone, such as calls, messages and music while you are driving. All of this is easy, safe and convenient thanks to the Infotainment system. Standard on Comfortline, R-Line and optional on Trendline.

03 We Connect 'Guide & Inform'. With We Connect 'Guide & Inform'² you can find interesting destinations in your area, free parking spaces in local car parks, the cheapest petrol stations nearby and also access the latest news from the internet. Optional on GTI and R-Line.

04 'Discover Media' Navigation System. When you are trying to find the best route, the optional 'Discover Media' navigation function helps you in your quest. In addition to the colour display, the system comes with installed map material for Europe and a touchscreen with a proximity sensor. Optional on GTI and R-Line.

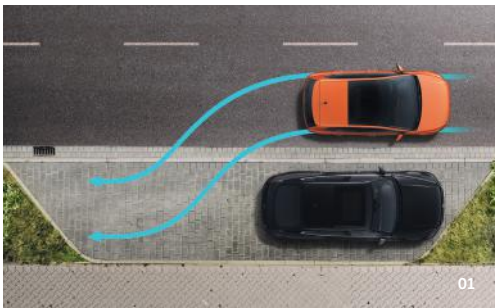
05 Wireless Charging. You can leave your charging wires at home from now on. Optional wireless mobile phone charging is available on the Polo. All you have to do is place your phone in the front storage compartment in your Polo. The inductive charging function makes sure you enjoy a full battery without having to mess around with cables. Your smartphone simply needs to support the Qi standard. Optional on Comfortline, R-Line and GTI.



¹ App-Connect is only available in conjunction with the 'Composition Media' radio system or the 'Discover Media' navigation function. App-Connect is compatible with MirrorLink®, Apple CarPlay™ and Android Auto™. The availability of this technology may vary according to country. App-Connect is already supported by numerous mobile phones and Volkswagen is currently working closely with smartphone manufacturers to make sure that a wider range of telephones can support App-Connect technologies.

² We Connect 'Guide and Inform' services are accessed via a compatible mobile device. Please see www.volkswagen.ie for more information. The use of all 'Guide and Inform' services entails exchanging large volumes of data. As such, we strongly recommend that you sign-up for a flat rate data plan with your mobile network provider. Alternatively, the optional CarStick and a separate SIM card with data option can be used. We Connect 'Guide & Inform' services are only available in conjunction with an existing mobile phone contract between you and your mobile phone company or with a contract concluded separately for this purpose, and only where coverage is available. Depending on your mobile phone tariff, receiving data from the internet may incur additional charges (for instance roaming charges), particularly if you are using Car-Net abroad. Due to the amount of data needed when using We Connect 'Guide & Inform' services, we strongly recommend signing up to a data flat rate with your mobile phone provider. Use of We Connect Guide & Inform is governed in a separate agreement concluded with Volkswagen AG. After taking possession of their vehicle, the customer has 90 days to register at www.volkswagen.ie/car-net. The availability of We Connect 'Guide and Inform' services may vary from country to country. The services are available during the agreed contractual period and may be subject to amendments. For more information on We Connect 'Guide and Inform' visit www.volkswagen.ie/car-net or contact your Volkswagen Dealer. Contact your mobile phone company for information on your mobile rates.

Driver assistance systems



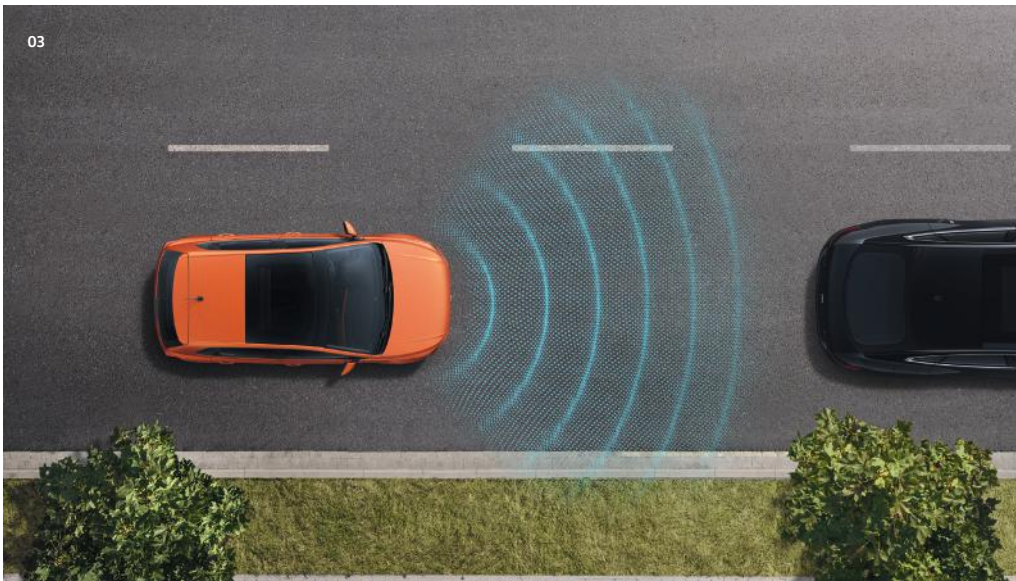
01 Park Assist. The optional 'Park Assist' system automatically steers your Polo into parallel and bay parking spaces – and it can even drive you back out again when you're parked in bay spaces.¹ All you need to do is look after the accelerator, brake and clutch. You'll never have trouble parking again, even in the tightest of spots. Only available on R-Line.



02 Driver Alert System. Imagine the following situation: you start getting tired while driving down a monotonous road. You hold the steering wheel rigidly and only make sudden steering manoeuvres. If the Driver Alert system notices that your steering has changed, the system recommends you to take a break.¹ Standard on GTI.



04 Front Assist. When you encounter the unexpected, 'Front Assist' area monitoring system with City Emergency Braking and Pedestrian Monitoring is on hand to help. The system warns you in the event of potential collisions or pedestrians crossing in front of the vehicle.¹ In really critical cases, the system helps you out by braking. Standard on all models.



03 Adaptive Cruise Control. When driving, you constantly have to react to other drivers, especially in busy traffic. The adaptive cruise control is on hand to help. Activated at the touch of a button, it automatically maintains a set distance to the vehicle in front¹ while observing your selected top speed. If the distance increases or decreases, the system automatically brakes or accelerates. When combined with a DSG dual clutch gearbox, it is even capable of automatically braking to bring your car to a complete stop. Only available on GTI.

¹ Within the system's limits.



Polo R-line



The sportiest way to get there: the Polo R-Line from Volkswagen. With the dynamic exterior, it presents itself at the first glance as a true athlete. The R-Line exterior includes bumpers in 'R' style, a black rear spoiler and sill extension plus a trapezoidal trim panel in the rear bumper. It also includes standard 16" 'Torsby' alloy wheels with a black diamond turned surface. The R-Line also features tinted rear windows- giving it that sporty appearance.

The R-Line includes an expressive interior that will immediately catch your eye.



Model show is the Polo R-Line with optional 'Pure White' solid paint. Model is for illustrative purposes only.

Polo GTI

Like every Volkswagen GTI, the Polo GTI also differs significantly from the other members of its family. Firstly, it bears the typical GTI insignia, including the red brake calliper, GTI lettering at the front and back, unique bumpers, spoilers and a honeycomb-shaped ventilation grille. The red design line at the front, which extends across the width of the ventilation grille and into the optional LED headlights, is a further striking feature. Fog lights and modern LED tail light clusters are fitted as standard. The 17 inch 'Milton Keynes' alloy wheels complete the vehicle's sporty appearance.

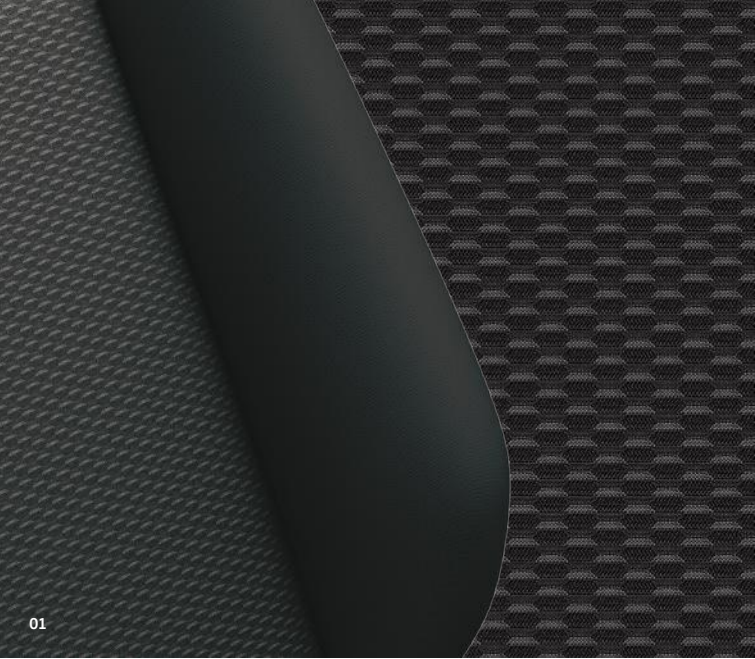
We compare the engine of the Polo GTI to that of an athlete at its peak. Quick off the mark with an acceleration of 0-62mph in 6.7 seconds, and its low fuel consumption means it barely breaks into a sweat.

The comfort in the Polo GTI will exceed your expectations. Conveniently control the standard 'Composition Media' radio with the multifunction sports steering wheel, which boasts a leather trim with decorative red stitching, a distinct detail also replicated on the gear lever and floor mats. The Titanium Black 'Clark' sports seats with their characteristic checked pattern and red stripes accentuate the GTI feeling even more.



Upholstery

- 01 **'Basket' cloth seat upholstery** Titanium Black. Standard on Trendline.
- 02 **'Slash' cloth seat upholstery** Titanium Black/ Ceramique. Standard on Comfortline & R-Line.
- 03 **'Clark' cloth seat upholstery** Titanium Black. Standard on GTI.
- 04 **'Level' cloth seat upholstery** Titanium Black. Optional on R-Line.



Wheels



- 01 15" Steel Wheel. Standard on Trendline.
- 02 15" Alloy Wheel 'Sassari'. Standard on Comfortline. Optional on Trendline.
- 03 16" Alloy Wheel 'Sebring'. Optional on R-Line (Black pack).
- 04 16" Alloy Wheel 'Las Minas'. Optional on Comfortline.
- 05 16" Alloy Wheel 'Torsby'. Optional on Comfortline and standard on R-Line.
- 06 17" Alloy Wheel 'Milton Keynes'. Standard on GTI.

The illustrations on these pages serve as a general guide only. The printing process cannot render the seat upholstery and paint finishes with absolute accuracy. The illustrations of the seats are of our basic seat model; the seats in the vehicle may differ should you decide to upgrade.

Paint

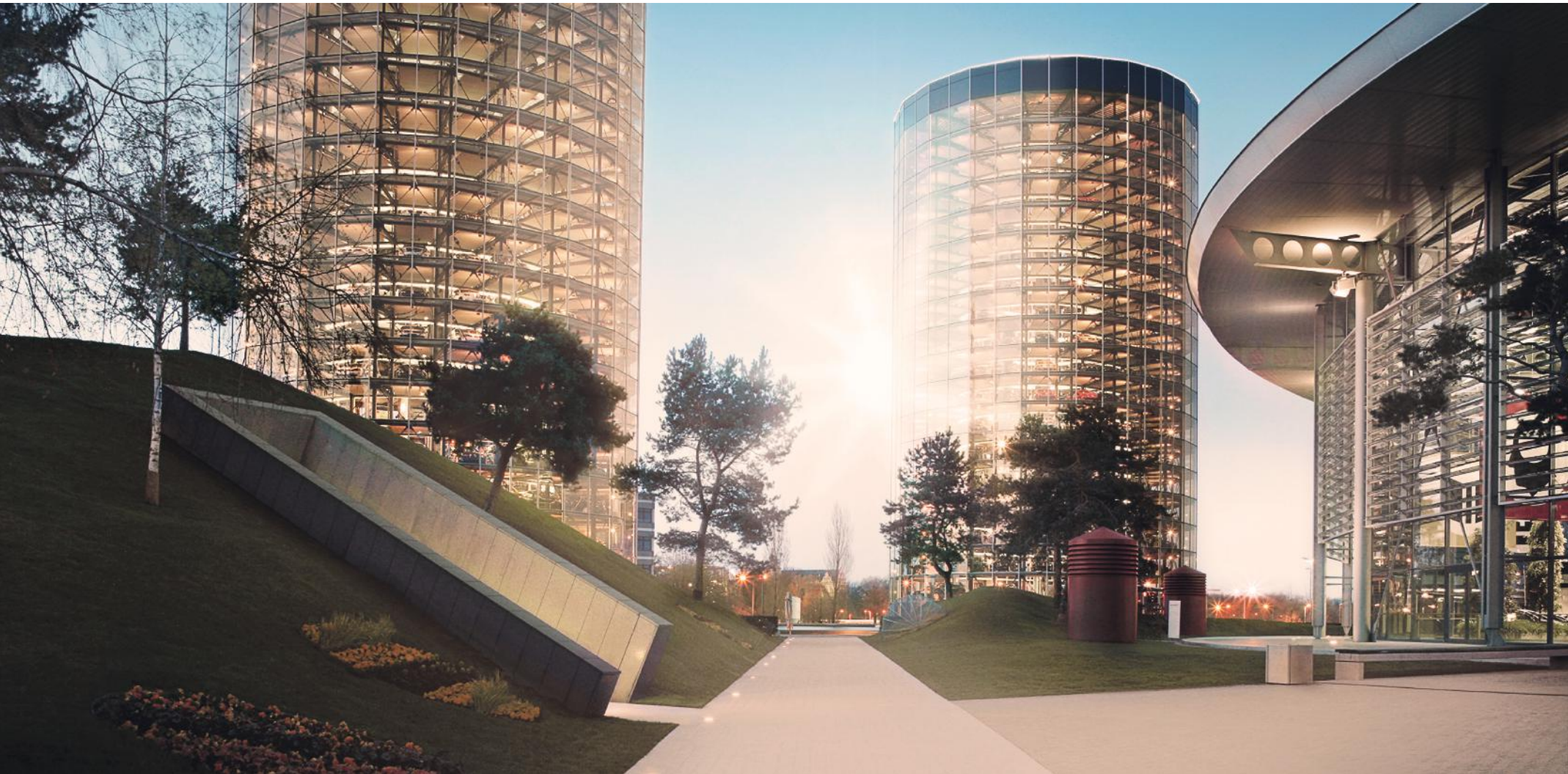


- 01 Pure White Non-Metallic paint
- 02 Urano Grey Non-Metallic paint
- 03 Reef Blue Metallic paint
- 04 Energetic Orange Metallic paint
- 05 Reflex Silver Metallic paint



- 06 Flash Red Non-Metallic paint
- 07 White Silver Metallic paint
- 08 Limestone Grey Metallic paint
- 09 Deep Black Pearl Effect paint

Discover the World of Volkswagen



Engines

For a full overview of engine availability, please download the Polo product guide at volkswagen.ie

Fuel Consumption

Fuel Consumption l/100km (max. - min): 7.3 - 5.5. CO2 emissions g/km (max. - min.) 164 - 125. Increased weight of a vehicle, including higher trim levels and the addition of options may have an effect on the fuel consumption and CO2 emissions produced. The CO2 and fuel consumption figures are the official figures obtained from tests under standardised EU test conditions.

The specified fuel consumption and emission values are the official figures obtained from tests under standardised EU test conditions in accordance with the Worldwide Harmonized Light Vehicles Test Procedure (WLTP), a more realistic test method for measuring fuel consumption (l/100km) and CO2 emissions. Information correct at the time of print. WLTP replaces the previous NEDC test method. The WLTP Min. values refer to the minimum values of the standard entry version excluding additional equipment such as optional extras and accessories which may have an effect on the fuel consumption (l/100km) and CO₂ emissions produced. The WLTP Max. values refers to the maximum value achieved considering optional extras. To discover exact values please configure your desired vehicle at volkswagen.ie/build . You can discover more about the WLTP at volkswagen.ie/wltp

The Volkswagen Warranty

Three-year Warranty

All Volkswagen Polo models come with a three-year/90,000km warranty which protects your car against the failure of most mechanical and electrical components due to manufacturing defects. This comprises a two-year manufacturer's warranty with unlimited mileage plus a further one-year/90,000km (whichever is soonest) warranty*. Full details of the three-year warranty are available from your authorised Volkswagen retailer.

* All warranty work must be completed by an authorised Volkswagen retailer or repairer.

Three-year Paint Warranty

The paintwork of the Polo is covered against manufacturing defects for a period of three years. Naturally, the Polo must be cared for in compliance with the operating instructions which will be found in your vehicle handbook. Please consult your Volkswagen retailer for full warranty details.

12-year Body Protection Warranty

The internal body sections and panels of the Polo are covered against rusting through from the inside for 12 years. Naturally, the Polo must be cared for in compliance with the operating instructions. Please consult your Volkswagen retailer for full warranty details.

Service Intervals for Engines

Full details of what checks and work are recommended at each service are contained in the Service Book and your retailer will be able to advise you of any particular requirements.

Approved Accessories

A comprehensive range of accessories from alloy wheels to carpet mats is available to complement the factory-fitted option list.

Volkswagen Finance

Volkswagen Finance offers a dedicated service to meet the needs of both the business user and the private motorist. We can help you choose the right type of finance and will tailor the package to meet your specific requirements. Please consult your Volkswagen retailer for details.

Volkswagen Assistance

Every new car is registered for Volkswagen Assistance for three years. This provides vehicle recovery in the unlikely event of a breakdown (subject to conditions).

Please Note:

Every effort has been made to ensure that the contents of this publication (including CO2 , fuel consumption and technical information) were accurate and up-to-date at the time of going to press

January 2020. Please be aware that model year and other changes (including specification or individual options) may impact on fuel consumption or CO2 figures. Please check with your retailer regarding any queries on a specific model or chassis number. Volkswagen Ireland reserves the right to change specifications and withdraw products from sale without notice. Any such alterations will be notified to Volkswagen retailers at the earliest opportunity; please consult your local Volkswagen retailer for the latest product information.

Some illustrations in this brochure do not necessarily reflect Irish specifications. Consequently, please visit volkswagen.ie or your local retailer for specific specification information.

The specifications contained in this brochure are for information purposes only as we cannot confirm the exact specifications of the vehicles. If you require any specific feature, you must consult your Volkswagen retailer who is regularly updated with any change in specification. Please check model availability and full specification details with your Volkswagen retailer prior to ordering.

The Polo

Volkswagen

Internet: www.volkswagen.ie

© Volkswagen Group Ireland Limited 2020.

At your Volkswagen retailer:

All rights reserved. January 2020.



facebook.com/VolkswagenIE



[@VolkswagenIE](https://twitter.com/VolkswagenIE)



youtube.com/VolkswagenIreland



[@VolkswagenIreland](https://instagram.com/VolkswagenIreland)