



# The T-Cross

Effective from 01.09.2020



# The T-Cross Range

## Petrol

Code	Model Description	Transmission	Trim	Fuel	VRT <sup>1</sup>	TAX <sup>1</sup>	HP	Combined CO <sub>2</sub> (WLTP) <sup>1</sup>	Combined I/100km (WLTP) <sup>1</sup>	RRP*	Delivery*	ROTR*
C112LV	T-CROSS 1.0 TSI 95HP	Manual	T-Cross	Petrol	TBC	TBC	95	TBC	TBC	€23,610	€800	€24,410
C112KZ	T-CROSS 1.0 TSI 115HP <i>Note: Limited stock only</i>	Automatic	T-Cross	Petrol	A4	€200	115	141	6.2	€26,195	€800	€26,995
C113LV	T-CROSS LIFE 1.0 TSI 95HP	Manual	Life	Petrol	TBC	TBC	95	TBC	TBC	€25,970	€800	€26,770
C113FZ	T-CROSS LIFE 1.0 TSI 110HP <i>(Start of production week 40/2020)</i>	Automatic	Life	Petrol	TBC	TBC	115	TBC	TBC	€28,920	€800	€29,720
C114FX	T-CROSS STYLE 1.0 TSI 110HP <i>(Start of production week 40/2020)</i>	Manual	Style	Petrol	TBC	TBC	115	TBC	TBC	€28,230	€800	€29,030
C114FZ	T-CROSS STYLE 1.0 TSI 110HP <i>(Start of production week 40/2020)</i>	Automatic	Style	Petrol	TBC	TBC	115	TBC	TBC	€30,100	€800	€30,900
C114FX	T-CROSS R-LINE 1.0 TSI 110HP <i>(Start of production week 40/2020)</i>	Manual	R-Line	Petrol	TBC	TBC	115	TBC	TBC	€29,410	€800	€30,210
C114FZ	T-CROSS R-LINE 1.0 TSI 110HP <i>(Start of production week 40/2020)</i>	Automatic	R-Line	Petrol	TBC	TBC	115	TBC	TBC	€31,280	€800	€32,080

ROTR Price = Recommended On the Road Price.

\* All prices (Retail, Delivery and ROTR) are recommended by Volkswagen Ireland.

The specified fuel consumption and emission values are the official figures obtained from tests under standardised EU test conditions in accordance with the Worldwide Harmonized Light Vehicles Test Procedure (WLTP), a more realistic test method for measuring fuel consumption (l/100km) and CO<sub>2</sub> emissions and are correct at the time of print. WLTP replaces the previous NEDC test method. The above values reflect the standard vehicle excluding additional equipment such as optional extras and accessories which may have an effect on the fuel consumption (l/100km) and CO<sub>2</sub> emissions produced. To discover exact values please configure your desired vehicle at [volkswagen.ie/build](http://volkswagen.ie/build). You can discover more about the WLTP at [volkswagen.ie/wltp](http://volkswagen.ie/wltp).

<sup>1</sup>VRT Bands and rate of Annual Road tax are valid as of 1st January 2020 and calculated from the correlated NEDC figure derived from WLTP for model year 2021 cars produced from CW30/2020 onwards. All vehicles with TBC are subject to EU type approval and with that were not available at time of going to print.

Please note every effort has been made to ensure the contents of this publication (including RRP, CO<sub>2</sub>, fuel consumption and technical information) were accurate and up-to-date at the time of going print 1st September 2020. Volkswagen Ireland reserves the right to change specification, prices and withdraw products from sale without notice. Any such alternations will be notified to Volkswagen Retailers at the earliest opportunity. Please consult your local Authorised Volkswagen retailer for the latest product information.

# The T-Cross Range

## Diesel

Code	Model Description	Transmission	Trim	Fuel	VRT <sup>1</sup>	TAX <sup>1</sup>	HP	Combined CO <sub>2</sub> (WLTP) <sup>1</sup>	Combined I/100km (WLTP) <sup>1</sup>	RRP*	Delivery*	ROTR*
C1123V	T-CROSS 1.6 TDI 95HP <i>Note: Limited stock only</i>	Manual	T-Cross	Diesel	A3	€190	95	135	5.2	€25,335	€800	€26,135
C1133V	T-CROSS LIFE 1.6 TDI 95HP <i>Note: Limited stock only</i>	Manual	Life	Diesel	A3	€190	95	137	5.2	€27,345	€800	€28,145
C1143Z	T-CROSS STYLE 1.6 TDI 95HP <i>Note: Limited stock only</i>	Automatic	Style	Petrol	A3	€190	95	142	5.4	€30,255	€800	€31,055

ROTR Price = Recommended On the Road Price.

\* All prices (Retail, Delivery and ROTR) are recommended by Volkswagen Ireland.

The specified fuel consumption and emission values are the official figures obtained from tests under standardised EU test conditions in accordance with the Worldwide Harmonized Light Vehicles Test Procedure (WLTP), a more realistic test method for measuring fuel consumption (l/100km) and CO<sub>2</sub> emissions and are correct at the time of print. WLTP replaces the previous NEDC test method. The above values reflect the standard vehicle excluding additional equipment such as optional extras and accessories which may have an effect on the fuel consumption (l/100km) and CO<sub>2</sub> emissions produced. To discover exact values please configure your desired vehicle at [volkswagen.ie/build](http://volkswagen.ie/build). You can discover more about the WLTP at [volkswagen.ie/wltp](http://volkswagen.ie/wltp).

<sup>1</sup>VRT Bands and rate of Annual Road tax are valid as of 1st January 2020 and calculated from the correlated NEDC figure derived from WLTP for model year 2021 cars produced from CW30/2020 onwards. All vehicles with TBC are subject to EU type approval and with that were not available at time of going to print.

Please note every effort has been made to ensure the contents of this publication (including RRP, CO<sub>2</sub>, fuel consumption and technical information) were accurate and up-to-date at the time of going print 1st September 2020. Volkswagen Ireland reserves the right to change specification, prices and withdraw products from sale without notice. Any such alternations will be notified to Volkswagen Retailers at the earliest opportunity. Please consult your local Authorised Volkswagen retailer for the latest product information.

# T-Cross

## Interior Equipment

- » Multifunction steering wheel
- » Instrument cluster with electronic speedometer, odometer, trip counter and tachometer
- » Fabric seat coverings in 'Basket' design
- » Decorative inserts in 'Softell' design
- » Power windows, front and rear
- » Front seats with height adjustment
- » Reading light in front and rear
- » Manual handbrake lever in plastic
- » Gearshift knob in plastic
- » Dimming rear view mirror
- » Standard pedal cluster
- » Sun visors with ticket pocket on driver side
- » Side and rear windows in heat insulating glass
- » Floor mats
- » Manually adjusted Lumbar support front seats
- » Luggage compartment lighting

## Exterior Equipment

- » 16" Dublin steel wheels
- » LED daytime running lights
- » LED tail lamp assembly
- » Power-adjustable and heated exterior mirrors
- » Body-coloured exterior mirror housings
- » Halogen headlamps with turn signal lamps in one clear lens
- » Rear window wiper and washer system with intermittent control

## Functional Equipment

- » 6.5" 'Composition Colour' radio system with 2 speakers
- » Digital radio reception
- » USB-C interface
- » Manual air conditioning
- » Lane keeping system 'Lane Assist'
- » Forward collision warning 'Front Assist' with autonomous emergency braking
- » Hillstart assist
- » Automatic headlight control with separate daytime running light and 'Coming Home' feature
- » Start/stop system with regenerative braking
- » Two-tone horn
- » Windshield wiper with intermittent control and light sensor
- » Central locking system, 2 remote keys
- » Headlight range control
- » Pedestrian monitoring
- » Multifunction display
- » We Connect (1 year subscription)
- » eCall (Emergency call button)
- » Speed limiter
- » Mobile phone interface (bluetooth)
- » Tyre Mobility Kit
- » Antenna for AM/FM reception

## Safety

- » Warning triangle
- » Driver and front passenger airbag with front passenger airbag deactivation
- » Curtain airbag system for front and rear passenger incl. side airbags in front
- » ESC (Electronic Stability Control) with driver steering recommendation, ABS, ASR, EDL,EDTC, and trailer stabilisation
- » Shock absorption suspension system in front and rear
- » Pedestrian protection
- » Luggage compartment lighting
- » 3 head restraints in rear
- » 3-point seat belts in front with height adjustment and seat belt pretensioner
- » Three 3-point seat belts in rear
- » Electromechanical speed-sensitive power steering
- » Warning signal and warning light for front and rear seat belts not fastened
- » Safety optimised front head restraints with three rear head restraints
- » Direct tire pressure monitoring system
- » 3 year warranty



The above specifications are for information purposes only as our products are continually updated and changes may be made to the specifications at any time. If you require any specific feature, you must consult your local dealer who is regularly updated with any change in specification. Specifications are subject to change without notice.

# T-Cross Life (in addition to T-Cross)

## Interior Equipment

- » Leather wrapped multifunction steering wheel
- » Fabric seat coverings in 'Triangle Ties' design
- » Decorative inserts in 'Pineapple' design
- » Manual handbrake lever in leather
- » Leather wrapped gearshift knob
- » Map pockets on backrest
- » Glove compartment door with light
- » Adjustable centre armrest in front
- » Sun visors with vanity mirror
- » Drawer under right front seat

## Exterior Equipment

- » 16" Belmont alloy wheels
- » Black roof rails
- » Front fog lights incl. static cornering light
- » Body coloured bumpers

## Functional Equipment

- » 8" 'Ready to Discover' radio system with 8 speakers incl. streaming & internet
- » Adaptive Cruise Control incl. speed limiter
- » Climatronic air conditioning
- » Wireless App Connect
- » Voice control
- » 2 USB-C interfaces



The above specifications are for information purposes only as our products are continually updated and changes may be made to the specifications at any time. If you require any specific feature, you must consult your local dealer who is regularly updated with any change in specification. Specifications are subject to change without notice.

# T-Cross Style (in addition to Life)

## Interior Equipment

- » Sport comfort seats in front
- » Fabric seat coverings in 'Hexalink' design
- » Decorative inserts in 'Lizard' design
- » Interior ambient lighting
- » Interior light in footwell
- » LED reading lights in front

## Exterior Equipment

- » 17" Bangalore alloy wheels
- » LED headlights
- » LED tail lamp with special styling
- » Tinted rear windows
- » Bumper with chrome molding
- » Silver-anodised roof rails
- » Chrome plated moldings with chrome molding in door cover

## Functional Equipment

- » Park distance control front and rear
- » Dynamic headlight range control
- » Chrome Package
- » Driver Alert System
- » Power folding mirrors
- » Lights & Vision package
- » Extended protection lockable wheel bolts



The above specifications are for information purposes only as our products are continually updated and changes may be made to the specifications at any time. If you require any specific feature, you must consult your local dealer who is regularly updated with any change in specification. Specifications are subject to change without notice.

# T-Cross R-Line (in addition to Style)

## Exterior Equipment

- » 17" Sebring alloy wheel
- » 'R-Line' front and rear bumpers incl. 'R-Line' side skirt
- » Radiator grille with 'R-Line' logo
- » 'R-Line' badging on sides
- » Exhaust pipe in grained black design including splitter
- » Black wheel housing flarings



# T-Cross R-Line (optional equipment)

## Interior Equipment

- » Fabric seat coverings in 'R-Line' design incl. 'R-Line' logo embossed on seat
- » 'R-Line' specific perforated leather multifunction steering wheel (DSG models gain gear shift paddles on steering wheel)
- » Pedal cluster in aluminium look
- » Decorative inserts in 'R-Line' Race style
- » Black headliner
- » 'R-Line' scuff plates in door sills
- » 'R-Line' style carpet mats front and rear



Images show optional interior equipment and 18" Nevada alloy wheel.



Images show optional interior equipment and 18" Nevada alloy wheel.



The above specifications are for information purposes only as our products are continually updated and changes may be made to the specifications at any time. If you require any specific feature, you must consult your local dealer who is regularly updated with any change in specification. Specifications are subject to change without notice.

# T-Cross Design Pack

## Exterior Equipment

- » 18" Köln alloy wheels painted in Design Pack colour (Black / Energetic Orange / Bamboo Garden) for Style & R-Line
- » Exterior mirror housings in Design Pack Colour (Black / Energetic Orange / Bamboo Garden)
- » Tinted rear windows

## Interior Equipment

- » Unique dashpad design 'Transition' in Design Pack colours (Energetic Orange & Grey / Black & Grey). See page 16 for details
- » Fabric seat coverings in unique 'Diag' design in Design Pack colours (see page 15 for details)
- » Leatherette on outer part of seats and headrests
- » Centre console in Design Pack colour (Black / Energetic Orange)
- » Steering wheel clasp in Design Pack colour (Black / Energetic Orange)



Design Pack: Energetic Orange



Design Pack: Black



Design Pack: Bamboo Garden



The above specifications are for information purposes only as our products are continually updated and changes may be made to the specifications at any time. If you require any specific feature, you must consult your local dealer who is regularly updated with any change in specification. Specifications are subject to change without notice.



# Option Packs

Options Priced  
From RRP

## W67 Technology Upgrade (Life)

€499

PLA	LIGHTS & VISION PACKAGE	Auto-dimming interior rearview mirror. Leaving home and manual coming home feature. Rain sensor. Automatic headlight control
7X2	PARK DISTANCE CONTROL FRONT AND REAR	Visual and audio warning for obstacles in front and rear
6YD	MIRROR PACKAGE	Power-adjustable, folding and heated exterior mirrors with front passenger exterior mirror lowering function

## W68 Technology Upgrade (Style & R-Line)

€799

RBD	'DISCOVER MEDIA' INCL. STREAMING & INTERNET NAVIGATION SYSTEM	Navigation system with 8" clear glass touch screen incorporating streaming and internet and dynamic road sign display
KA1	REAR VIEW CAMERA	Rear view camera as parking aid
WW1	WINTER PACKAGE	Heated front seats, warning light for washer fluid level and automatically heated washer nozzles in front

# Options

## Driver Assistance Systems

			T-Cross	Life	Style	R-Line	Options Priced From RRP
7X5	PARALLEL 'PARK ASSIST'	Parallel parking assistant "Park Assist" including Park Distance Control for front and rear.	–	–	○	○	€344
KA1	REAR VIEW CAMERA	Rear view camera as parking aid.	–	○	○	○	€318
7X2	PARK DISTANCE CONTROL	Visual and audio warning for obstacles in front and rear.	○	○	■	■	€558
8G1	HIGH BEAM CONTROL 'LIGHT ASSIST'	Automatic activation and deactivation of the main light beam.	–	–	○	○	€175
PES	PROACTIVE PASSENGER PROTECTION SYSTEM	Pre-crash with Restraint system	–	○	○	○	€174
7Y9	BLIND SPOT MONITOR	Blind spot monitor with Rear traffic alert	–	○	○	○	€353
PLA	LIGHTS AND VISION PACKAGE	Auto-dimming interior rearview mirror. Leaving home and manual coming home feature. Rain sensor. Automatic headlight control.	○	○	■	■	€146

## Functional

			T-Cross	Life	Style	R-Line	Options Priced From RRP
1D2	TRAILER HITCH	Removable trailer hitch	○	○	○	–	€878
6YD	FOLDING MIRRORS	Power adjustable, folding and heated exterior mirrors with front passenger exterior mirror lowering function.	–	○	■	■	€192
WD1	ANTI-THEFT ALARM PLUS	Anti-theft alarm system with interior monitoring, backup horn, and towing protection. Incl. central locking system with SAFELOCK.	–	○	○	○	€340
8WH	FRONT FOG LIGHTS	Incl. static cornering light.	○	■	■	■	€215
9ZV	WIRELESS CHARGING	Wireless smartphone charging in the storage compartment in front of gearstick. Only for Qi-enabled devices.	–	○	○	○	€135
4I3	KEYLESS ACCESS	Keyless access without SAFELOCK.	–	–	○	○	€426
9S0	DIGITAL COCKPIT PRO	High resolution 10.25" screen replacing the conventional speedometer and allows for multiple views	–	○	○	○	€453

■ Standard ○ Optional – Not available

Note: Some options may require other options depending on the item and trim line.

# Options (continued)

Comfort			T-Cross	Life	Style	R-Line	Options Priced From RRP
WW1	WINTER PACK	Heated front seats, warning light for washer fluid level and automatically heated washer nozzles in front.	–	○	○	○	€375
PU3	LEATHER MULTIFUNCTION STEERING WHEEL WITH GEARSHIFT CONTROL	Enables control of gearshift, multifunction display, radio and telephone via steering wheel Note: Only available on DSG models	–	○	○	○	€87

Styling			T-Cross	Life	Style	R-Line	Options Priced From RRP
4KF	TINTED REAR WINDOWS		–	○	■	■	€215
WII	R-LINE INTERIOR	Seat trim covers in R-Line fabric. Chrome package, ambient lighting, sports comfort seats in front, aluminium look pedal cluster, carpet mats in front and rear in R-Line design, R-Line bumpers, hand brake lever handle and gearshift knob in leather, scuff plates in door apertures, 2 reading lights in front, R-Line leather multifunction sports steering wheel and black headliner Note: Requires PJ2 18" Nevada alloy wheels Note: DSG models gain gear shift paddles on steering wheel	–	–	–	○	€760
3S2	BLACK ROOF RAILS		○	■	–	–	€203
PAD	DESIGN PACK 'BLACK' FOR STYLE & R-LINE	See page 8 for details	–	–	○	–	€344
			–	–	–	○	€246
PAE	DESIGN PACK 'ENERGETIC ORANGE' FOR STYLE & R-LINE	See page 8 for details	–	–	○	–	€344
			–	–	–	○	€246
PAF	DESIGN PACK 'BAMBOO GARDEN' FOR STYLE & R-LINE	See page 8 for details	–	–	○	–	€344
			–	–	–	○	€246

■ Standard ○ Optional – Not available

Note: Some options may require other options depending on the item and trim line.

# Options (continued)

## Audio and Navigation

			T-Cross	Life	Style	R-Line	Options Priced From RRP
RBD	NAVIGATION SYSTEM 'DISCOVER MEDIA'	Navigation system with 8" clear glass touch screen incorporating streaming and internet and dynamic road sign display	–	○	○	○	€641
9IJ	MOBILE PHONE INTERFACE 'COMFORT'	Incl. wireless smartphone charging in the storage compartment in front of gearstick. Only for Qi-enabled devices.	–	○	○	○	€529

## Alloys

			T-Cross	Life	Style	R-Line	Options Priced From RRP
PJI	16" ROCHESTER ALLOY WHEELS	6J x 16 'Rochester' alloy wheels with wheel locks and extended anti-theft protection. 205/60 R16 with low rolling resistance tyres.	○	–	–	–	€682
			–	○	–	–	€164
PJF	18" FUNCHAL ALLOY WHEELS	7J x 18 'Funchal' alloy wheels with wheel locks and extended anti-theft protection. 215/45 R18 tyres.	–	–	○	–	€388
			–	–	–	○	€261
PJN	18" FUNCHAL ALLOY WHEELS IN ADAMANTIUM SILVER	7J x 18 'Funchal' alloy wheels in Adamantium Silver with wheel locks and extended anti-theft protection. 215/45 R18 tyres.	–	–	○	–	€388
			–	–	–	○	€261
PJG	18" KÖLN ALLOY WHEELS	7J x 18 'Köln' alloy wheels in black diamond-turned surface, with wheel locks and extended anti-theft protection. 215/45 R18 tyres.	–	–	○	–	€388
			–	–	–	○	€261
PJ2	18" NEVADA ALLOY WHEELS	7J x 18 'Nevada' alloy wheels in black with diamond-turned surface, with wheel locks and extended antitheft protection. 215/45 R18 tyres.	–	–	○	–	€514
			–	–	–	○	€388

## Paint

			T-Cross	Life	Style	R-Line	Options Priced From RRP
MP0	SOLID PAINT- FREE	Urano Grey	○	○	○	–	€0
MP9	SOLID PAINT	Pure White, Flash Red, Black	○	○	○	○	€178
MP1	METALLIC PAINT	Limestone Grey, Reflex Silver, Pale Copper, Energetic Orange, Reef Blue	○	○	○	○	€711
MP2	PREMIUM METALLIC PAINT	Makena Turquoise	○	○	○	○	€711
MP3	PREMIUM SOLID PAINT	Dark Petrol	○	○	○	–	€280
MP7	PEARL EFFECT PAINT	Deep Black	○	○	○	○	€711

■ Standard ○ Optional – Not available

Note: Some options may require other options depending on the item and trim line.

# Colours



**Urano Grey Solid** 5K5K  
Note: not available with R-Line



**Pure White Solid \*** 0Q0Q



**Flash Red Solid \*** D8D8  
Note: not available with R-Line



**Black Solid \*** A1A1  
Note: not available with R-Line



**Limestone Grey Metallic \*** Z1Z1



**Reflex Silver Metallic \*** 8E8E



**Pale Copper Metallic \*** J7J7



**Makena Turquoise Premium Metallic \*** 0Z0Z



**Energetic Orange Metallic \*** 4M4M



**Reef Blue Metallic \*** 0A0A



**Dark Petrol Premium Solid\*** 5M5M  
Note: not available with R-Line



**Deep Black Pearl Effect \*** 2T2T

\*Optional at extra cost • Please see Options section for pricing information.

# Upholstery



**"Basket" Cloth**  
Platinum Grey (EL)  
Standard on T-Cross



**"Triangle Ties" Cloth**  
Platinum Grey (UL)  
Standard on Life



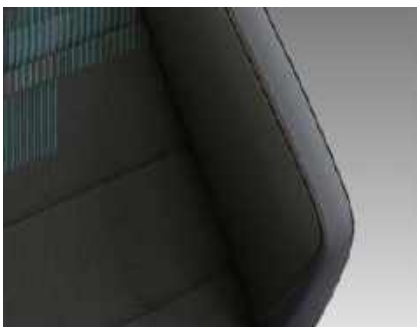
**"Hexalink" Cloth**  
Pearl Grey (FL)  
Standard on Style & R-Line



**"Diag" (Design Pack Black)**  
Neutral/Titan Black Cloth (UL)  
Optional on Style & R-Line



**"Diag" (Design Pack Energetic Orange)**  
Orange/Ceramique Cloth (GL)  
Optional on Style & R-Line



**"Diag" (Design Pack Bamboo Garden)**  
Makena Turquoise - Orange/Platinum  
Grey Cloth (DL)  
Optional on Style & R-Line



**"Carbon Flag" Cloth (R-Line Interior)**  
Crystal Grey (OK)  
Optional on R-Line

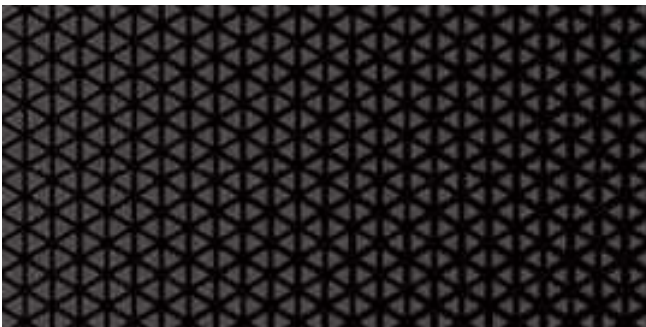
# Dashpads



**Softell**  
Standard on T-Cross



**Pinapple**  
Standard on Life



**Lizard**  
Standard on Style & R-Line



**Transition - Energetic Orange & Grey**  
Optional on Style & R-Line  
(Design Pack Energetic Orange)



**Transition - High-gloss Black & Grey**  
Optional on Style & R-Line  
(Design Pack Black & Design Pack Bamboo Garden)



**Race**  
Optional on R-Line  
(R-Line Interior)

# Colour and Fabric Combinations

	Dashboard Pads/ Door cards	Centre Console	Door Card	Mirror Housings	Urano Grey Solid (5K5K)	Pure White Solid* (0Q0Q)	Black Solid* (A1A1)	Flash Red Solid* (D8D8)	Dark Petrol Premium Solid* (5M5M)	Reflex Silver Metallic* (8E8E)	Limestone Grey Metallic* (Z1Z1)	Pale Copper Metallic* (J7J7)	Reef Blue Metallic* (0A0A)	Energetic Orange Metallic* (4M4M)	Deep Black Pearl Effect Metallic* (2T2T)	Makena Turquoise Premium Metallic* (0Z0Z)
<b>T-Cross (Standard)</b>																
"Basket" Platinum Grey Cloth	EL Softell	Soft black/ grained	Soft Black	Body colour	☐ <sup>1</sup>	☐	☐	☐	☐	☐	☐	☐	☐	☐	☐ <sup>1</sup>	☐
<b>Life (Standard)</b>																
"Triangle Ties" Platinum Grey Cloth	UL Pineapple	Matte black	Pineapple	Body colour	☐ <sup>1</sup>	☐	☐	☐	☐	☐	☐	☐	☐	☐	☐ <sup>1</sup>	☐
<b>Style (Standard)</b>																
"Haxalink" Pearl Grey Cloth	FL Lizard	High gloss shadow steel	Lizard	Body colour	☐ <sup>1</sup>	☐	☐	☐	☐	☐	☐	☐	☐	☐	☐ <sup>1</sup>	☐
<b>R-Line (Standard)</b>																
"Haxalink" Pearl Grey Cloth	FL Lizard	High gloss shadow steel	Lizard	Body colour	-	☐	-	-	-	☐	☐	☐	☐	☐	☐ <sup>1</sup>	☐
<b>Life, Stlye &amp; R-Line (Optional)*</b>																
"Diag" Neutral/ Titan Black (Design Pack Black)	UL Transition (High gloss black/ grey)	High gloss black	Transition	Black	☐	☐	☐	☐	☐	☐	☐	☐	☐	☐	☐	☐
"Diag" Orange/ Ceramique (Design Pack Energetic Orange)	GL Transition (Energetic orange/ grey)	Energetic orange metallic	Transition	Energetic Orange	☐	☐	☐	-	-	☐	☐	-	-	☐	☐	-
"Diag" Makena Turquoise- Orange/ Platinum Grey (Design Pack Bamboo Garden)	DL Transition (High gloss black/ grey)	High gloss black	Transition	Bamboo Garden	☐	☐	☐	-	-	☐	☐	-	-	-	☐	-
<b>R-Line (Optional)*</b>																
"Carbon Flag" Crystal Grey (R-Line Interior)	OK Race	High gloss black/ Shadow steel	Race	Body colour	-	☐	-	-	-	☐	☐	☐	☐	☐	☐ <sup>1</sup>	☐

- Not available ☐ available <sup>1</sup>Note: Mirror housings in black • \*Optional at extra cost



# Alloy Wheels



**STANDARD ON T-CROSS**  
16" Dublin steel wheels  
6J X 16 Tyres: 205/60 R16



**STANDARD ON LIFE**  
16" Belmont alloy wheels  
6J X 16 Tyres:205/60 R16



**STANDARD ON STYLE**  
17" Bangalore alloy wheels  
6J X 17 Tyres:205/55 R17



**STANDARD ON R-LINE**  
17" Sebring alloy wheels  
6.5J X 17 Tyres:205/55 R17



**OPTIONAL ON T-CROSS & LIFE**  
16" Rochester alloy wheels  
6J X 16 Tyres:205/60 R16



**OPTIONAL ON STYLE & R-LINE**  
18" Funchal alloy wheels  
7J X 18 Tyres:215/45 R18



**OPTIONAL ON STYLE & R-LINE**  
18" Funchal alloy wheels  
- Adamantium Silver  
7J X 18 Tyres:215/45 R18



**OPTIONAL ON STYLE & R-LINE**  
18" Nevada alloy wheels with  
burnished finish  
7J X 18 Tyres:215/45 R18

# Design Pack Alloy Wheels



**OPTIONAL ON STYLE & R-LINE  
DESIGN PACK BLACK**

18" Köln alloy wheels in Black with  
burnished finish  
7J X 18 Tyres:215/45 R18



**OPTIONAL ON STYLE & R-LINE  
DESIGN PACK ENERGETIC ORANGE**

18" Köln alloy wheels in Energetic Orange  
7J X 18 Tyres:215/45 R18



**OPTIONAL ON STYLE & R-LINE  
DESIGN PACK BAMBOO GARDEN**

18" Köln alloy wheels in Bamboo Garden  
7J X 18 Tyres:215/45 R18

# Technical Data

Engine	1.0 TSI 95HP <sup>1</sup>	1.0 TSI 110HP <sup>1</sup>	1.6 TDI 95HP <sup>1</sup>
Gearbox type	5 speed manual	6 speed manual	7 speed auto DSG
Engine type	Petrol	Petrol	Petrol
Fuel tank capacity, ltrs	40	40	40
Cubic capacity, ltrs/cc	999	999	1,598
Max. output, kW/HP	70/95	81/110	81/110
Max. torque, Nm	175	TBC	TBC
<b>Performance</b>			
Top speed, km/h, where the law permits:	180	TBC	TBC
Acceleration, secs 0 – 100km/h:	11.5	TBC	TBC
Environmental information			
Official fuel consumption ltr per 100km:			
<b>WLTP: (Min-Max)</b>			
Low	TBC	TBC	TBC
Medium	TBC	TBC	TBC
High	TBC	TBC	TBC
Extra High	TBC	TBC	TBC
Combined	TBC	TBC	TBC
WLTP Emissions Combined, CO <sub>2</sub> g/km:	TBC	TBC	TBC
Emission class	EURO 6 AP	EURO 6 AP	EURO 6

The specified fuel consumption and emission values are the official figures obtained from tests under standardised EU test conditions in accordance with the Worldwide Harmonized Light Vehicles Test Procedure (WLTP), a more realistic test method for measuring fuel consumption (l/100km) and CO<sub>2</sub> emissions and are correct at the time of print. WLTP replaces the previous NEDC test method. The WLTP Min. value refers to the minimum values of the standard entry version excluding additional equipment such as optional extras and accessories which may have an effect on the fuel consumption (l/100km) and CO<sub>2</sub> emissions produced. The WLTP Max. value refers to the maximum value achieved considering optional extras. To discover exact values please configure your desired vehicle at please visit [volkswagen.ie/build](http://volkswagen.ie/build). You can discover more about the WLTP at [volkswagen.ie/wltp](http://volkswagen.ie/wltp).

<sup>1</sup>VRT Bands and rate of Annual Road tax are valid as of 1st January 2020 and calculated from the correlated NEDC figure derived from WLTP for model year 2021 cars produced from CW30/2020 onwards. All vehicles with TBC are subject to EU type approval and with that were not available at time of going to print.

Please note every effort has been made to ensure the contents of this publication (including RRP, CO<sub>2</sub>, fuel consumption and technical information) were accurate and up-to-date at the time of going print 1st September 2020. Volkswagen Ireland reserves the right to change specification, prices and withdraw products from sale without notice. Any such alternations will be notified to Volkswagen Retailers at the earliest opportunity. Please consult your local Authorised Volkswagen retailer for the latest product information.