



The T-Cross

Effective from 14.06.2022



The T-Cross

Petrol

Code	Model Description	Transmission	Trim	Fuel	VRT ¹	Annual Road Tax ¹	HP	Combined CO ₂ (WLTP) ²	Combined I/100km (WLTP) ²	RRP ³	Delivery ³	ROTR*
C113LV	T-CROSS LIFE 1.0 TSI 95HP	Manual	Life	Petrol	17.50%	B1 €200	95	130	5.7	€28,080	€850	€28,930
C113FZ	T-CROSS LIFE 1.0 TSI 110HP	Automatic	Life	Petrol	21.50%	C €270	110	141	6.2	€32,365	€850	€33,215
C114FX	T-CROSS STYLE 1.0 TSI 110HP	Manual	Style	Petrol	19.25%	B2 €210	110	131	5.8	€29,255	€850	€30,105
C114FZ	T-CROSS STYLE 1.0 TSI 110HP	Automatic	Style	Petrol	21.50%	C €270	110	141	6.2	€32,825	€850	€33,675
C114FX	T-CROSS R-LINE 1.0 TSI 110HP	Manual	R-Line	Petrol	17.50%	B1 €200	115	130	5.7	€30,285	€850	€31,135
C114FZ	T-CROSS R-LINE 1.0 TSI 110HP	Automatic	R-Line	Petrol	21.50%	C €270	110	141	6.2	€34,245	€850	€35,095

¹VRT Bands and rate of Annual Road Tax are valid as of 1st January 2022 and calculated from the base model WLTP values for model year 2023 cars produced from CW25/2022 onwards. All vehicles with TBC are subject to EU type approval and with that were not available at time of going to print.

²The specified fuel consumption and emission values are the official figures obtained from tests under standardised EU test conditions in accordance with the Worldwide Harmonized Light Vehicles Test Procedure (WLTP). The above values reflect the standard vehicle excluding additional equipment such as optional extras and accessories which may have an effect on the fuel consumption (l/100km) and CO₂ emissions produced.

To discover exact values please configure your desired vehicle at volkswagen.ie/build. You can discover more about the WLTP at volkswagen.ie/wltp.

³All prices (Retail, Delivery and ROTR) are recommended by Volkswagen Ireland.

*Recommended On the Road Price.

Importantly note that the rate at which your vehicle pays Vehicle Registration Tax may increase as a result of your vehicle configuration. For more information, please consult your local Authorised Volkswagen retailer.

In accordance with (EU) 2020/740 ("Tire Labeling Regulation"), please visit volkswagen.ie/configurator for details relating to the tyres applicable to said vehicles.

Please note every effort has been made to ensure the contents of this publication (including RRP, CO₂, fuel consumption and technical information) were accurate and up-to-date at the time of going to print 08th June 2022. Volkswagen Ireland reserves the right to change specification, prices and withdraw products from sale without notice. Any such alternations will be notified to Volkswagen Retailers at the earliest opportunity. Please consult your local Authorised Volkswagen retailer for the latest product information.

3 Years Tyre Insurance covers tyres that are damaged by an Insured Event. Exclusions do apply. For more information on general terms and conditions, please click here (<https://www.volkswagen.ie/en/owners-and-users/wheels-and-tyres.html>)

T-Cross Life

Interior Equipment

- » Leather wrapped multifunction steering wheel with shift paddles
- » Digital Cockpit
- » Power windows, front and rear
- » Front seats with height adjustment
- » Reading light in front and rear
- » Dimming rear view mirror
- » Side and rear windows in heat insulating glass
- » Floor mats
- » Manually adjusted Lumbar support front seats
- » Luggage compartment lighting
- » Fabric seat coverings in 'Triangle Ties' design
- » Decorative inserts in 'Pineapple' design
- » Manual handbrake lever in leather
- » Leather wrapped gearshift knob
- » Map pockets on backrest
- » Glove compartment door with light
- » Adjustable centre armrest in front
- » Sun visors with vanity mirror
- » Drawer under right front seat

Exterior Equipment

- » 16" Belmont alloy wheels
- » Tinted rear windows
- » LED daytime running lights
- » LED tail lamp assembly
- » Folding mirrors
- » Body-coloured exterior mirror housings
- » Halogen headlamps with turn signal lamps in one clear lens
- » Rear window wiper and washer system with intermittent control
- » Black roof rails
- » Front fog lights incl. static cornering light
- » Body coloured bumpers

Functional Equipment

- » 8" 'Ready to Discover' radio system with 8 speakers incl. streaming & internet
- » Rear View Camera
- » Wireless inductive charging
- » Digital radio reception
- » USB-C interface
- » Lane keeping system 'Lane Assist'
- » Forward collision warning 'Front Assist' with autonomous emergency braking
- » Hillstart assist
- » Automatic headlight control with separate daytime running light and 'Coming Home' feature
- » Start/stop system with regenerative braking
- » Two-tone horn
- » Windshield wiper with intermittent control and light sensor
- » Central locking system, 2 remote keys
- » Headlight range control
- » Pedestrian monitoring
- » We Connect (3 year subscription)
- » eCall (Emergency call button)
- » Adaptive Cruise Control incl. speed limiter
- » Climatronic air conditioning touch concept
- » Wireless App Connect
- » Voice control
- » 2 USB-C interfaces
- » Mobile phone interface (bluetooth)
- » Tyre Mobility Kit
- » Antenna for AM/FM reception

Safety

- » Warning triangle
- » Driver and front passenger airbag with front passenger airbag deactivation
- » Curtain airbag system for front and rear passenger incl. side airbags in front
- » ESC (Electronic Stability Control) with driver steering recommendation, ABS, ASR, EDL,EDTC, and trailer stabilisation
- » Shock absorption suspension system in front and rear
- » Pedestrian protection
- » Luggage compartment lighting
- » 3 head restraints in rear
- » 3-point seat belts in front with height adjustment and seat belt pretensioner
- » Three 3-point seat belts in rear
- » Electromechanical speed-sensitive power steering
- » Warning signal and warning light for front and rear seat belts not fastened
- » Safety optimised front head restraints with three rear head restraints
- » Direct tire pressure monitoring system
- » 3 year warranty



The above specifications are for information purposes only as our products are continually updated and changes may be made to the specifications at any time. If you require any specific feature, you must consult your local dealer who is regularly updated with any change in specification. Specifications are subject to change without notice.

T-Cross Style (in addition to Life)

Interior Equipment

- » Sport comfort seats in front
- » Fabric seat coverings in 'Hexalink' design
- » Decorative inserts in 'Lizard' design
- » Interior ambient lighting
- » Interior light in footwell
- » LED reading lights in front
- » Heated front seats

Exterior Equipment

- » 17" Bangalore alloy wheels
- » LED headlights
- » LED tail lamp with special styling
- » Chrome Package
- » Bumper with chrome molding
- » Silver-anodised roof rails
- » Chrome plated moldings with chrome molding in door cover

Functional Equipment

- » Park distance control front and rear
- » Dynamic headlight range control
- » Keyless Access
- » Driver Alert System
- » Power folding mirrors
- » Lights & Vision package
- » Extended protection lockable wheel bolts



The above specifications are for information purposes only as our products are continually updated and changes may be made to the specifications at any time. If you require any specific feature, you must consult your local dealer who is regularly updated with any change in specification. Specifications are subject to change without notice.

T-Cross R-Line (in addition to Style)

Exterior Equipment

- » 17" Sebring alloy wheel
- » 'R-Line' front and rear bumpers incl. 'R-Line' side skirt
- » Radiator grille with 'R-Line' logo
- » 'R-Line' badging on sides
- » Exhaust pipe in grained black design including splitter
- » Black wheel housing flarings



T-Cross R-Line (optional equipment)

Interior Equipment

- » Fabric seat coverings in 'R-Line' design incl. 'R-Line' logo embossed on seat
- » 'R-Line' specific perforated leather multifunction steering wheel (DSG models gain gear shift paddles on steering wheel)
- » Pedal cluster in aluminium look
- » Decorative inserts in 'R-Line' Race style
- » Black headliner
- » 'R-Line' scuff plates in door sills
- » 'R-Line' style carpet mats front and rear

Exterior Equipment

- » 18" Nevada alloy wheel



Images show optional interior equipment and 18" Nevada alloy wheel.



Images show optional interior equipment and 18" Nevada alloy wheel.



The above specifications are for information purposes only as our products are continually updated and changes may be made to the specifications at any time. If you require any specific feature, you must consult your local dealer who is regularly updated with any change in specification. Specifications are subject to change without notice.

T-Cross Black Design Pack

Exterior Equipment

- » 18" Köln alloy wheels painted in Design Pack colour (Black) for Style & R-Line
- » Exterior mirror housings in Design Pack Colour (Black)
- » Tinted rear windows



Design Pack: Black

Interior Equipment

- » Unique dashpad design 'Transition' in Design Pack colours (Energetic Orange & Grey / Black & Grey). See page 14 for details
- » Fabric seat coverings in unique 'Diag' design in Design Pack colours (see page 13 for details)
- » Leatherette on outer part of seats and headrests
- » Centre console in Design Pack colour (Black)
- » Steering wheel clasp in Design Pack colour (Black)



Design Pack: Black



The above specifications are for information purposes only as our products are continually updated and changes may be made to the specifications at any time. If you require any specific feature, you must consult your local dealer who is regularly updated with any change in specification. Specifications are subject to change without notice.

Options

The addition of optional extras may result in the vehicle increasing in Co2 g/km and therefore, attracting a higher rate of VRT than described in this product guide. **For your exact configuration value, both Co2 g/km and RRP, please visit volkswagen.ie/configurator.**

Driver Assistance Systems

			Life	Style	R-Line	Options Priced From RRP
7X5	PARALLEL 'PARK ASSIST'	Parallel parking assistant "Park Assist" including Park Distance Control for front and rear.	—	○	○	€190
7X2	PARK DISTANCE CONTROL	Visual and audio warning for obstacles in front and rear.	○	■	■	€635
PLA	LIGHTS AND VISION PACKAGE	Auto-dimming interior rearview mirror. Leaving home and manual coming home feature. Rain sensor. Automatic headlight control.	○	■	■	€170

Functional

			Life	Style	R-Line	Options Priced From RRP
950	DIGITAL COCKPIT PRO	High resolution 10.25" screen replacing the conventional speedometer and allows for multiple views	—	○	○	€400

Styling

			Life	Style	R-Line	Options Priced From RRP
WIL	R-LINE INTERIOR	Seat trim covers in R-Line fabric. Chrome package, ambient lighting, sports comfort seats in front, aluminium look pedal cluster, carpet mats in front and rear in R-Line design, R-Line bumpers, hand brake lever handle and gearshift knob in leather, scuff plates in door apertures, 2 reading lights in front, R-Line leather multifunction sports steering wheel and black headliner <i>Note: Requires PJ2 18" Nevada alloy wheels</i>	—	—	○	€845
PAD	DESIGN PACK 'BLACK' FOR STYLE & R-LINE	See page 7 for details	—	○	—	€310
			—	—	○	€165

Note: Option prices are calculated based on VRT2021 and will be updated in due course.

The addition of optional extras may result in the vehicle increasing in Co2 g/km and therefore, attracting a higher rate of VRT than described in this product guide. **For your exact configuration value, both Co2 g/km and RRP, please visit volkswagen.ie/configurator.**

For exact options prices for your vehicle, please contact your local dealer or visit www.volkswagen.ie

■ Standard ○ Optional — Not available

Note: Some options may require other options depending on the item and trim line.

Options (continued)

The addition of optional extras may result in the vehicle increasing in Co2 g/km and therefore, attracting a higher rate of VRT than described in this product guide. **For your exact configuration value, both Co2 g/km and RRP, please visit [volkswagen.ie configurator](https://www.volkswagen.ie/configurator).**

Audio and Navigation			Life	Style	R-Line	Options Priced From RRP
RBD	NAVIGATION SYSTEM 'DISCOVER MEDIA'	Navigation system with 8" clear glass touch screen incorporating streaming and internet and dynamic road sign display	—	o	o	€720

Alloys			Life	Style	R-Line	Options Priced From RRP
PJI	16" ROCHESTER ALLOY WHEELS	6J x 16 'Rochester' alloy wheels with wheel locks and extended anti-theft protection. 205/60 R16 with low rolling resistance tyres.	o	—	—	€190
PJG	18" KÖLN ALLOY WHEELS	7J x 18 'Köln' alloy wheels in black diamond-turned surface, with wheel locks and extended anti-theft protection. 215/45 R18 tyres.	—	o	—	€440
			—	—	o	€295
PJ2	18" NEVADA ALLOY WHEELS	7J x 18 'Nevada' alloy wheels in black with diamond-turned surface, with wheel locks and extended antitheft protection. 215/45 R18 tyres.	—	o	—	€590
			—	—	o	€440

Paint			Life	Style	R-Line	Options Priced From RRP
MP0	SOLID PAINT- FREE	Ascot Grey	o	o	—	€0
MP9	SOLID PAINT	Pure White	o	o	o	€185
MP1	METALLIC PAINT	Smoky Grey, Reflex Silver, Energetic Orange, Reef Blue	o	o	o	€795
MP2	PREMIUM METALLIC PAINT	Makena Turquoise	o	o	o	€1,030
MP7	PEARL EFFECT PAINT	Deep Black	o	o	o	€795

Note: Option prices are calculated based on VRT2021 and will be updated in due course.

The addition of optional extras may result in the vehicle increasing in Co2 g/km and therefore, attracting a higher rate of VRT than described in this product guide. **For your exact configuration value, both Co2 g/km and RRP, please visit [volkswagen.ie configurator](https://www.volkswagen.ie/configurator).**

For exact options prices for your vehicle, please contact your local dealer or visit www.volkswagen.ie

■ Standard o Optional — Not available

Note: Some options may require other options depending on the item and trim line.

Colours



Ascot Grey Solid *

6U6U



Pure White Solid *

0Q0Q



Makena Turquoise
Premium Metallic *

0Z0Z



Reef Blue Metallic *

0A0A



Smokey Grey Metallic *

5W5W



Reflex Silver Metallic *

8E8E



Energetic Orange Metallic *

4M4M



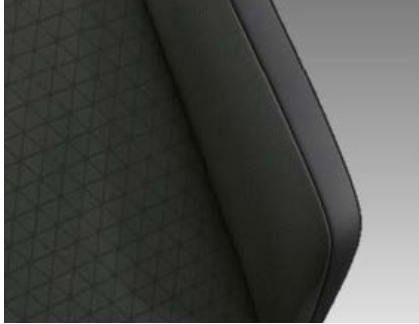
Deep Black Pearl Effect *

2T2T

*Optional at extra cost • Please see Options section for pricing information.

Effective from 14 June 2022, for production from CW25/2022 onwards. All prices include VAT and VRT. Prices and specifications are subject to change without notice.

Upholstery



"Triangle Ties" Cloth

Platinum Grey (UL)
Standard on Life



"Hexalink" Cloth

Pearl Grey (FL)
Standard on Style & R-Line



"Diag" (Design Pack Black)

Neutral/Titan Black Cloth (UL)
Optional on Style & R-Line



"Carbon Flag" Cloth (R-Line Interior)

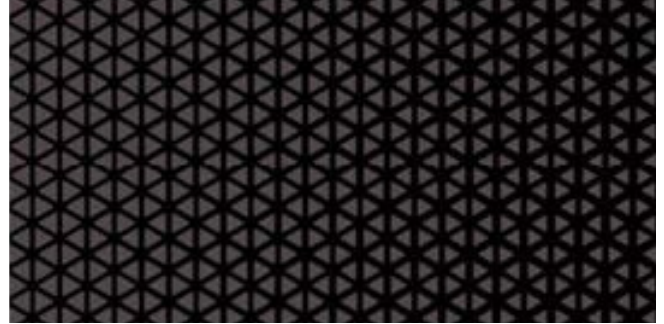
Crystal Grey (OK)
Optional on R-Line

Dashpads



Pinapple

Standard on Life



Lizard

Standard on Style & R-Line



Transition - High-gloss Black & Grey

Optional on Style & R-Line
(Design Pack Black & Design Pack Bamboo Garden)



Race

Optional on R-Line
(R-Line Interior)

Colour and Fabric Combinations

	Dashboard Pads/ Door cards	Centre Console	Door Card	Mirror Housings	Ascot Grey Solid* (6U6U)	Pure White Solid* (0Q0Q)	Reflex Silver Metallic* (8E8E)	Smokey Grey Metallic* (5W5W)	Reef Blue Metallic* (0A0A)	Energetic Orange Metallic* (4M4M)	Deep Black Pearl Effect Metallic* (2T2T)	Makena Turquoise Premium Metallic* (0Z0Z)
Life (Standard)												
"Triangle Ties" Platinum Grey Cloth	UL Pineapple	Matte black	Pineapple	Body colour	□ ¹	□	□	□	□	□	□ ¹	□
Style (Standard)												
"Haxalink" Pearl Grey Cloth	FL Lizard	High gloss shadow steel	Lizard	Body colour	□ ¹	□	□	□	□	□	□ ¹	□
R-Line (Standard)												
"Haxalink" Pearl Grey Cloth	FL Lizard	High gloss shadow steel	Lizard	Body colour	–	□	□	□	□	□	□ ¹	□
Life, Stlye & R-Line (Optional)*												
"Diag" Neutral/ Titan Black (Design Pack Black)	UL Transition (High gloss black/ black/ grey)	High gloss black	Transition	Black	□	□	□	□	□	□	□	□
R-Line (Optional)*												
"Carbon Flag" Crystal Grey (R-Line Interior)	OK Race	High gloss black/ Shadow steel	Race	Body colour	–	□	□	□	□	□	□ ¹	□

– Not available □ available ¹Note: Mirror housings in black • *Optional at extra cost

Effective from 14 June 2022, for production from CW25/2022 onwards. All prices include VAT and VRT. Prices and specifications are subject to change without notice.

Alloy Wheels

The addition of optional extras may result in the vehicle increasing in Co2 g/km and therefore, attracting a higher rate of VRT than described in this product guide. **For your exact configuration value, both Co2 g/km and RRP, please visit [volkswagen.ie configurator](https://www.volkswagen.ie/configurator).**



STANDARD ON LIFE

16" Belmont alloy wheels
6J X 16 Tyres:205/60 R16



STANDARD ON STYLE

17" Bangalore alloy wheels
6J X 17 Tyres:205/55 R17



STANDARD ON R-LINE

17" Sebring alloy wheels
6.5J X 17 Tyres:205/55 R17



OPTIONAL ON T-CROSS & LIFE

16" Rochester alloy wheels
6J X 16 Tyres:205/60 R16



OPTIONAL ON STYLE & R-LINE

18" Nevada alloy wheels with
burnished finish
7J X 18 Tyres:215/45 R18

The addition of optional extras may result in the vehicle increasing in Co2 g/km and therefore, attracting a higher rate of VRT than described in this product guide. **For your exact configuration value, both Co2 g/km and RRP, please visit [volkswagen.ie configurator](https://www.volkswagen.ie/configurator).**

Design Pack Alloy Wheels

The addition of optional extras may result in the vehicle increasing in Co2 g/km and therefore, attracting a higher rate of VRT than described in this product guide. **For your exact configuration value, both Co2 g/km and RRP, please visit [volkswagen.ie configurator](https://www.volkswagen.ie/configurator).**



**OPTIONAL ON STYLE & R-LINE
DESIGN PACK BLACK**

18" Köln alloy wheels in Black with
burnished finish
7J X 18 Tyres:215/45 R18

The addition of optional extras may result in the vehicle increasing in Co2 g/km and therefore, attracting a higher rate of VRT than described in this product guide. **For your exact configuration value, both Co2 g/km and RRP, please visit [volkswagen.ie configurator](https://www.volkswagen.ie/configurator).**

Technical Data

Engine	1.0 TSI 95HP ¹	1.0 TSI 110HP ¹	
Gearbox type	5 speed manual	6 speed manual	7 speed auto DSG
Engine type	Petrol	Petrol	Petrol
Fuel tank capacity, ltrs	40	40	40
Cubic capacity, ltrs/cc	999	999	999
Max. output, kW/HP	70/95	81/110	81/110
Max. torque, Nm	175	200	200
Performance			
Top speed, km/h, where the law permits:	180	189	189
Acceleration, secs 0 – 100km/h:	11.6	10.8	11.3
Environmental information			
Official fuel consumption ltr per 100km:			
WLTP: (Min-Max)			
Low	7.0 - 7.2	7.2 - 7.4	7.9 - 8.1
Medium	5.5 - 5.8	5.5 - 5.7	6.1 - 6.3
High	5.0 - 5.3	4.9 - 5.1	5.4 - 5.7
Extra High	6.0 - 6.3	6.0 - 6.3	6.4 - 6.7
Combined	5.8 - 6.0	5.7 - 6.0	6.2 - 6.5
WLTP Emissions Combined, CO ₂ g/km:	130 - 137	130 - 135	141 - 147
Emission class	EURO 6 AP	EURO 6 AP	

¹VRT Bands and rate of Annual Road Tax are valid as of 1st January 2022 and calculated from the base model WLTP values for model year 2023 cars produced from CW25/2022 onwards. All vehicles with TBC are subject to EU type approval and with that were not available at time of going to print.

²The specified fuel consumption and emission values are the official figures obtained from tests under standardised EU test conditions in accordance with the Worldwide Harmonized Light Vehicles Test Procedure (WLTP). The above values reflect the standard vehicle excluding additional equipment such as optional extras and accessories which may have an effect on the fuel consumption (l/100km) and CO₂ emissions produced.

To discover exact values please configure your desired vehicle at volkswagen.ie/build. You can discover more about the WLTP at volkswagen.ie/wltp.

³All prices (Retail, Delivery and ROTR) are recommended by Volkswagen Ireland.

*Recommended On the Road Price.

Importantly note that the rate at which your vehicle pays Vehicle Registration Tax may increase as a result of your vehicle configuration. For more information, please consult your local Authorised Volkswagen retailer.

In accordance with (EU) 2020/740 ("Tire Labeling Regulation"), please visit volkswagen.ie/configurator for details relating to the tyres applicable to said vehicles.

Please note every effort has been made to ensure the contents of this publication (including RRP, CO₂, fuel consumption and technical information) were accurate and up-to-date at the time of going print 8th June 2022. Volkswagen Ireland reserves the right to change specification, prices and withdraw products from sale without notice. Any such alternations will be notified to Volkswagen Retailers at the earliest opportunity. Please consult your local Authorised Volkswagen retailer for the latest product information.